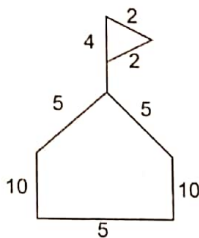


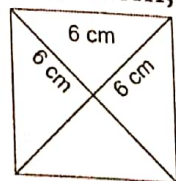


Set 1

1. Ragini draws a hut with a flag. She paints the outline using blue colour. She wonders what the perimeter of this figure is. Can you help Ragini find the perimeter?



2. Rohan's notebook is rectangular. He puts a coloured tape around its cover. Find the length of the tape used if the dimensions of the book are 15 cm by 10 cm.
3. Mehul has two photo frames. One is square shaped with side 8 cm, and the other is rectangular with dimensions 10 cm × 4 cm. Mehul has only a 1-m long ribbon. Will he be able to decorate the borders of both frames with this ribbon?
4. Maya has a square-shaped garden. She decides to plant roses all along the boundary, leaving 1 m for the gate. The side of the garden is 450 cm. Find in metres the distance covered by the roses.
5. Sudipta makes a wall hanging. Using triangles, she cuts 3 equilateral triangles and decorates them. If the sides of the triangles are 5 cm, 6 cm, and 9 cm respectively, find out the perimeter of each triangle.
6. Manu has 4 square tiles of side 4 cm. She arranges them in a line adjacent to each other. What is the perimeter of the resultant figure?
7. Rakesh joins 4 equilateral triangles of sides 6 cm, as shown in the figure.



Can you find out the perimeter of the resultant figure?

8. Sona has 3 rectangular tiles of dimensions $10\text{ cm} \times 4\text{ cm}$. She arranges them, as shown in the figure.



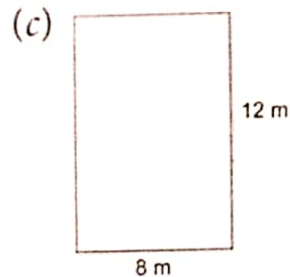
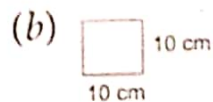
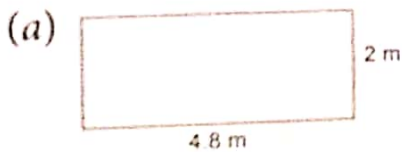
Find the perimeter of the resultant figure.

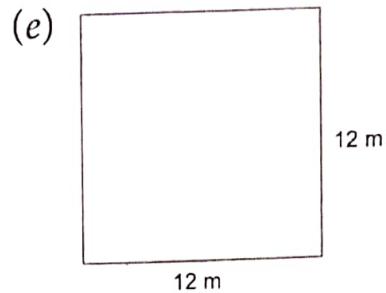
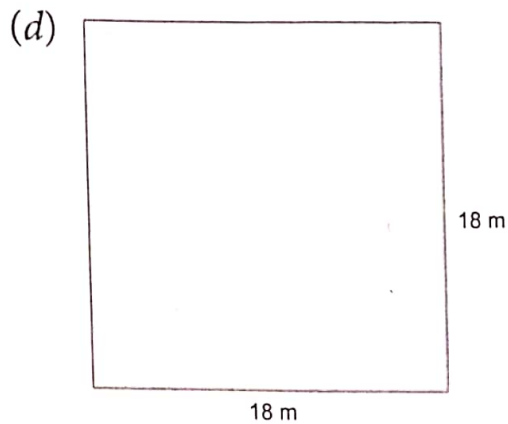
9. Madhu has a rectangular kitchen garden of dimensions 100 cm by 45 cm . She plants potatoes in half of the total area. Can you find out what area she has utilized for potatoes?
10. Dibya plans to plant Ashoka trees along the border of her farmhouse. Find out the length of the Ashoka tree stretch if the boundary of her farmhouse is 32 m long and 22 m wide.
11. Ronak's class teacher has assigned him the task of decorating the display board of the class. What length of border will he need if the dimensions of the board are 2.5 m by 1 m ?
12. Faizal polishes the top of his centre table. Has he polished on the area or perimeter of the table?
13. A rectangular park of dimensions 280 m by 140 m has 4 square grass patches in 4 corners. If 1 square patch is of side 80 m , what area of the park is not covered by the green patches?
14. The area of a square garden is 4900 sq m . Can you tell the side of the square park?



Set 2

1. Find the perimeter and area of the following figures.





2. Find the perimeter, area, and volume for the following measurements.

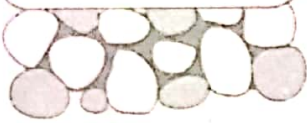
Length	Breadth	Height	Perimeter	Area	Volume
12.5 cm	9 cm	4 cm			
9 mm	7 mm	5 mm			
14 cm	8.5 cm	7 cm			
10.4 m	9 m	6 m			
2.25 m	1.20 m	80 cm			

- A football field is 260 m long and 225 m wide. What is the area of the field?
- Arun's lunch box is 8 cm long, 5 cm wide, and 4 cm high. Meetu's lunch box is 10 cm long, 4 cm wide, and 3 cm high. Whose box has a bigger volume?
- Find the perimeter and area of the surfaces of the following items.
 - A 250 g packet of tea
 - A picture frame in your room
 - A magazine
 - The newspaper that comes to your home
- Find the volume of the following.
 - Your pencil box
 - Your Maths book
 - Your dictionary



1. The distance around a figure is called its _____.
2. The amount of surface enclosed by a solid is called its _____.
3. The number of 1 cm cubes required to make a 4 cm cube is _____.
4. The formula for the perimeter of a rectangle is _____.
5. The area of a square is given as _____.
6. The formula for the perimeter of a square is _____.
7. The area of a figure is measured in _____.
8. Volume of a cuboid = _____
9. The number of 1 cm squares that can fit in a rectangle of area 14 sq cm is _____.
10. The amount of space enclosed by a solid is called its _____.

Multiple-Choice Questions



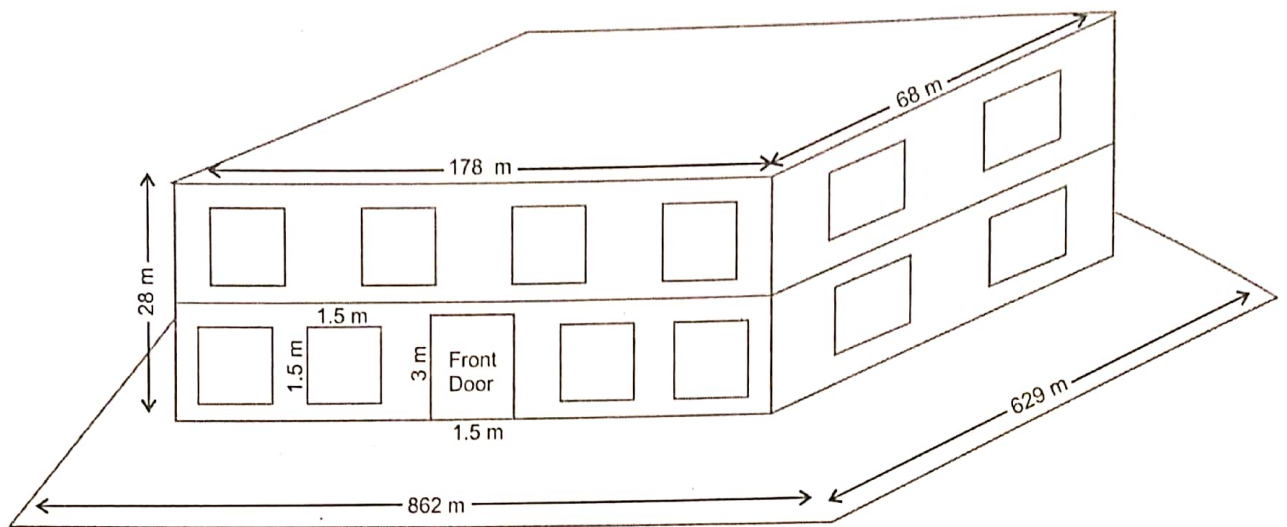
1. The perimeter of a rectangle is given by _____.
(a) $3(l + b)$ (b) $2(l + b)$
(c) $2(l - b)$ (d) $3(l - b)$
2. The area of a rectangle with length 12 cm and breadth 4 cm is _____.
(a) 96 cm^2 (b) 24 cm^2 (c) 48 cm^2 (d) 36 cm^2
3. The perimeter of a square with side 18 cm is _____.
(a) 36 cm^2 (b) 324 cm (c) 72 cm^2 (d) 72 cm
4. The area of a square with side 9 m is _____.
(a) 36 m^2 (b) 81 m^2 (c) 81 m (d) 36 m
5. The volume of a cuboid is given by _____.
(a) $V = l + b \times h$ (b) $V = l \times b + h$ (c) $V = l \times b \times h$ (d) $V = l(b + h)$

1. (b) 2. (c) 3. (d) 4. (b) 5. (c)

Answers

Worksheet

The measurement of Rinni's school compound is shown in the figure. Study the figure and answer the questions that follow.



1. What is the perimeter of the building?
2. What is the area of the roof of the building?
3. What is the area of the front door?
4. What is the area of a window?
5. What is the perimeter of the school compound?
6. What is the area of the school compound?

8. PERIMETER, AREA, AND VOLUME

Set 1

1. 43 cm
2. 50 cm
3. Yes
4. 17 m
5. 15 cm, 18 cm, and 27 cm
6. 40 cm
7. 24 cm
8. 68 cm
9. 2250 sq cm
10. 108 m
11. 7 m
12. Area
13. 13,600 sq m
14. 70 m

Set 2

3. 58500 m²
4. Arun's lunch box

Mental Maths

1. Perimeter
2. Area
3. 64
4. $2(\text{length} + \text{breadth})$
5. $(\text{Sides})^2$
6. $4 \times \text{side}$
7. Sq units
8. $\text{Length} \times \text{breadth} \times \text{height}$
9. 14
10. Volume